

- 1
- 2
- 3
- 4
- 5
- 6
- 7
- 8
- 9
- 10
- 11
- 12
- 13
- 14
- 15
- 16
- 17
- 18

**MATERIAL**

Glass-fibre reinforced polyamide based (PA) technopolymer, black colour, matte finish.

**STANDARD EXECUTIONS**

- **VCRT-N**: square pass-through hole with brass reinforcement.
- **VCRT-FP**: brass boss, threaded pass-through hole.

**SPECIAL EXECUTION ON REQUEST**

Square pass-through hole without brass reinforcement.

**ACCESSORIES ON REQUEST**

CA.VCT: polypropylene-based (PP) technopolymer boss cap, in Elecolors colours, matte finish. For sufficient quantities, it can be supplied in other colours or with customised graphic symbols, marks or writings.



<b>C9</b>	<b>C2</b>	<b>C3</b>	<b>C4</b>	<b>C5</b>	<b>C6</b>	<b>C17</b>
RAL9005	RAL2004	RAL7035	RAL1021	RAL5024	RAL3000	RAL6017

**CA.VCT**

	C9	C2	C3	C4	C5	C6	C17	
Cap for	Code							Description
VCRT.32	6900	6903	6904	6905	6906	6901	6907	CA.VCT.32-*
VCRT.40	6910	6913	6914	6915	6916	6911	6917	CA.VCT.40-*
VCRT.50	6920	6923	6924	6925	6926	6921	6927	CA.VCT.50-*
VCRT.63-74-95	6930	6933	6934	6935	6936	6931	6937	CA.VCT.63-74-95-*

\* Complete with colour index (C9, ..., C17).

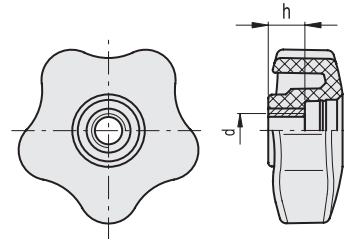
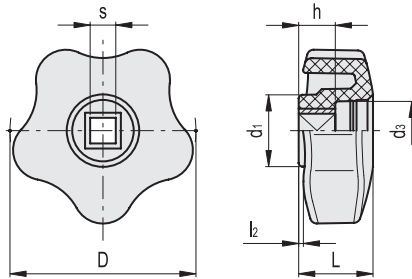
ELESA Original design

**VCRT-N**

**VCRT-FP**

**Conversion Table**  
1 mm = 0.039 inch

mm	inch
32	1.26
40	1.57
50	1.97
63	2.48
74	2.91
95	3.74



**VCRT-N**

**METRIC**

Code	Description	D	sH9	L	d1	d3	l2	h+0.5	Δ
168986	VCRT.32 N-5x5	32	5	14	15	11	1	6.5	8
168987	VCRT.32 N-6x6	32	6	14	15	11	1	6.5	7
169001	VCRT.40 N-6x6	40	6	17	17	12.5	1	9.5	10
169101	VCRT.50 N-6x6	50	6	20	19	15.5	1.2	9.5	23
169111	VCRT.50 N-7x7	50	7	20	19	15.5	1.2	9.5	22
169201	VCRT.63 N-6x6	63	6	21.5	22.5	19.5	1.3	9.5	36
169211	VCRT.63 N-7x7	63	7	21.5	22.5	19.5	1.3	9.5	35
169221	VCRT.63 N-8x8	63	8	21.5	22.5	19.5	1.3	9.5	34
169311	VCRT.74 N-7x7	74	7	24.5	26.5	19.5	2	13.5	51
169321	VCRT.74 N-8x8	74	8	24.5	26.5	19.5	2	13.5	50
169331	VCRT.74 N-9x9	74	9	24.5	26.5	19.5	2	13.5	49
169341	VCRT.74 N-10x10	74	10	24.5	26.5	19.5	2	13.5	48
169421	VCRT.95 N-8x8	95	8	29.5	32	18	4.5	13.5	64
169441	VCRT.95 N-10x10	95	10	29.5	32	18	4.5	13.5	63

**VCRT-FP**

**METRIC**

Code	Description	D	d6H	L	d1	d3	l2	h	Δ
168982	VCRT.32 FP-M5	32	M5	14	15	11	1	8	8
168983	VCRT.32 FP-M6	32	M6	14	15	11	1	8	8
168984	VCRT.32 FP-M8	32	M8	14	15	11	1	8	7
168997	VCRT.40 FP-M6	40	M6	17	17	12.5	1	10	12
168998	VCRT.40 FP-M8	40	M8	17	17	12.5	1	10	10
168999	VCRT.40 FP-M10	40	M10	17	17	12.5	1	10	9
169098	VCRT.50 FP-M8	50	M8	20	19	15.5	1.2	10	23
169099	VCRT.50 FP-M10	50	M10	20	19	15.5	1.2	10	21
169197	VCRT.63 FP-M10	63	M10	21.5	22.5	19.5	1.3	15	35
169198	VCRT.63 FP-M12	63	M12	21.5	22.5	19.5	1.3	15	34
169307	VCRT.74 FP-M10	74	M10	24.5	26.5	19.5	2	15	48
169308	VCRT.74 FP-M12	74	M12	24.5	26.5	19.5	2	15	47
169418	VCRT.95 FP-M16	95	M16	29.5	32	18	4.5	15	60

Clamping elements