



DC POWER CONNECTORS: KLDX Series

PCB Mount DC Power Jack

Product Features

2.0mm and 2.5mm
 Built-In DC On/Off Switch
 Laptop and Palm Computers, Portable Modems, Radar Detectors, and Other Portable Device Applications
 CSA/NRTL Certified File No. LR78160
 UL File No. E140125

Performance Specifications

Materials and Finish

Plastic Housing: PBT, UL94V-0 Rated, Black Color
Center Pin: Copper Alloy, Nickel Plated
Contact #1 and #3: Brass, Tin Plated
Contact #2: Phosphor Bronze, Tin Plated

Electrical Characteristics

Contact Resistance

Before Durability Test
Between Terminals: 30 milliohms Max.
Plug to Contacts: 50 milliohms Max.

After Durability Test

Between Terminals: 60 milliohms Max.
Plug to Contacts: 100 milliohms Max.

Rated Voltage: 24V DC

Rated Current: 3.5A

Insulation Resistance: 100 Megohms Min. at 500V DC

Dielectric Withstanding Voltage: 500V AC RMS for 1 Minute

Mechanical Characteristics

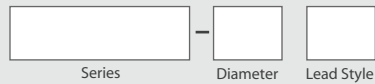
Durability Test: 5000 Cycles
Insertion Force: 0.3kg - 2.5kg
Extraction Force: 0.3kg - 2.5kg
Operating Temperature: -25°C to +85°C

2D Drawing	IGES	STEP	3D PDF
Solder Profile	CofC RoHS Compliant	CofC REACH Compliant	UL Plastic File
Certificate of Origin	Check Stock	Request a Sample	Send Us An Email

Generated Part Number



Part Number Builder



Series

KLDX-0202 - PCB Mount DC Power Jack

Diameter

A - 2.0mm Center Pin Diameter
 B - 2.5mm Center Pin Diameter

Lead Style

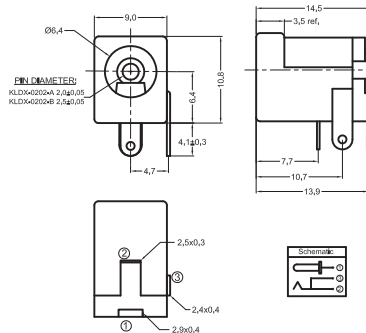
Blank - Standard Straight
 C - Crimped

Contact Kycon For HT Reflow Compatible and Other Options

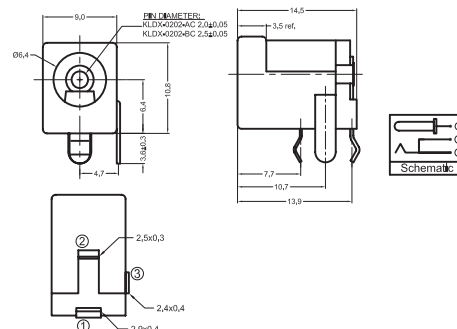
KLDX Series

Dimensions in mm

KLDX-0202-x



KLDX-0202-xC



*Also available - KLDX-HT Reflow Compatible
 Contact factory for specifications. 888-KYCON-22