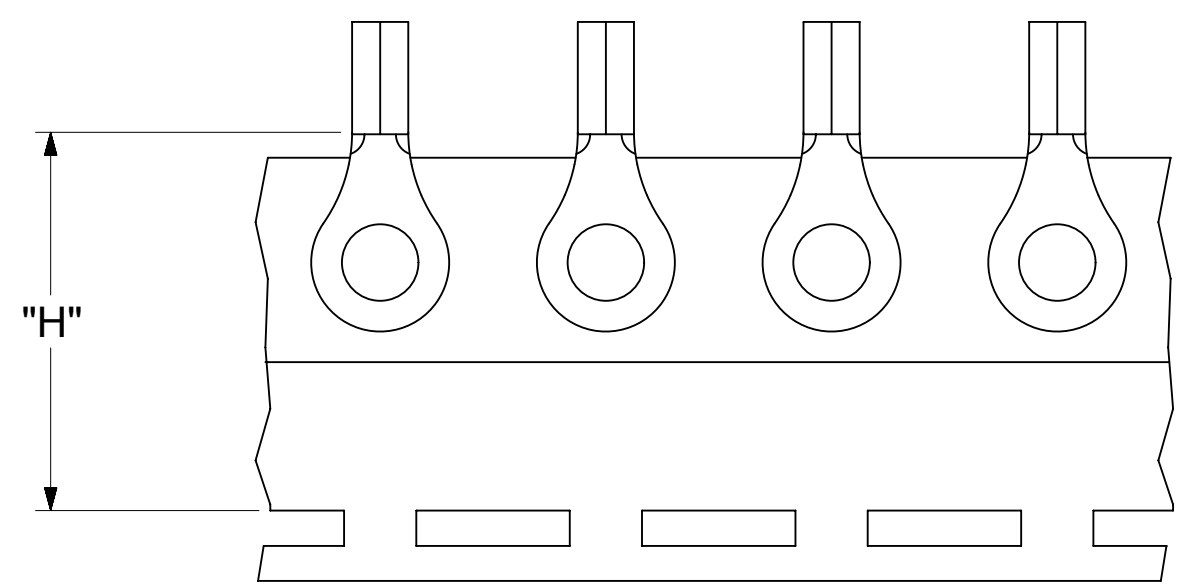
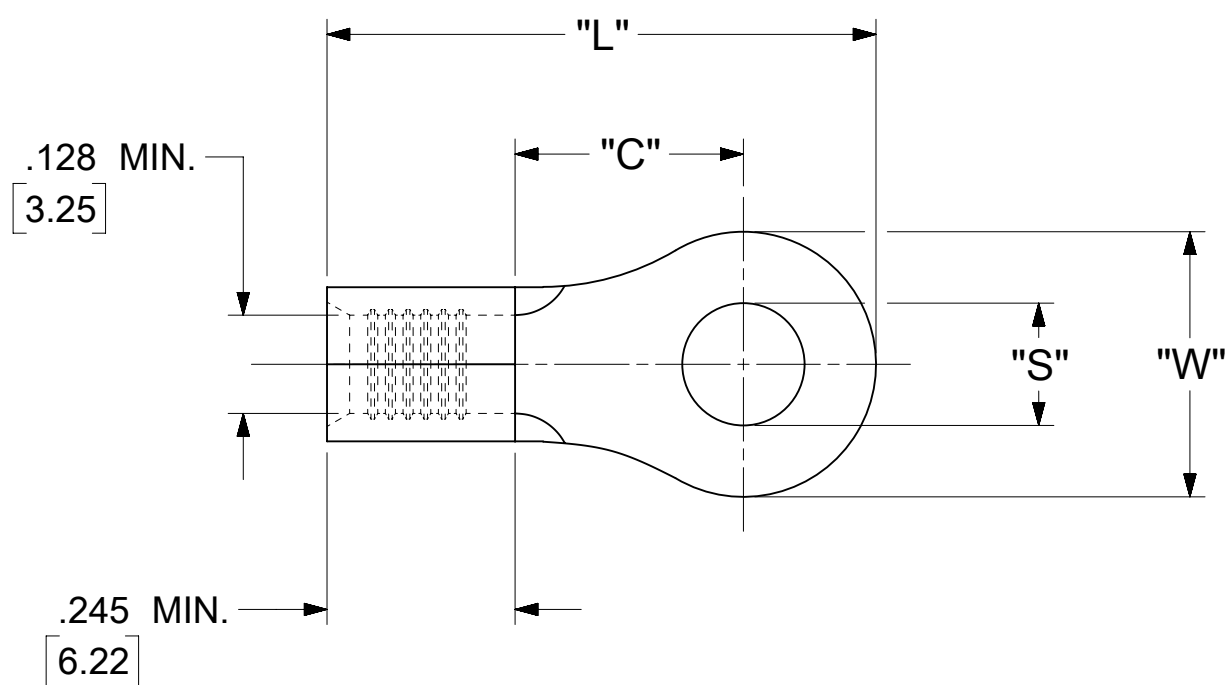


LOOSE PIECE		TAPE MOUNTED		SPECIFICATIONS					
MATERIAL NUMBER	ENGINEERING NUMBER	MATERIAL NUMBER	ENGINEERING NUMBER	STUD SIZE	"S" ±.005 [0.13]	"W" ±.010 [0.25]	"C" MIN.	"L" MAX.	"H"
190690192	C-101-12	---	---	12	.515 [13.08]	.750 [19.05]	.611 [15.52]	1.280 [32.51]	1.300 [33.02]
190690195	C-101-14	---	---	14	.265 [6.73]				
190690196	C-101-38	190690145	C-101-38T	38	.390 [9.91]				
---	---	---	---	56	.328 [8.33]				
190690198	C-101-76	190690146	C-101-76T	76	.453 [11.51]				
190690217	C-130-10	190690218	C-130-10T	10	.198 [5.03]	.530 [13.46]	.393 [9.98]	.952 [24.18]	.980 [24.89]
190690219	C-130-14	190690221	C-130-14T	14	.265 [6.73]				
---	---	---	---	38	.390 [9.91]				
190690223	C-130-56	190690225	C-130-56T	56	.328 [8.33]	.282 [7.16]	.306 [7.77]	.741 [18.82]	.980 [24.89]
---	---	---	---	4	.119 [3.02]				
190690230	C-136-06	190690232	C-136-06T	6	.146 [3.71]				
190690233	C-136-08	190690235	C-136-08T	8	.173 [4.39]				
190690236	C-140-10	---	---	10	.198 [5.03]				
190690238	C-140-14	190690240	C-140-14T	14	.265 [6.73]	.592 [15.04]	.468 [11.89]	1.056 [26.82]	1.172 [29.77]
190690241	C-140-38	190690243	C-140-38T	38	.390 [9.91]				
190690244	C-140-56	190690246	C-140-56T	56	.328 [8.33]				
---	---	---	---	209	.209 [5.31]				
---	---	---	---	413	.413 [10.50]				



PARTS ON TAPE

- NOTES:
1. MATERIAL: COPPER .040±.001 [1.02] STOCK THK.
 2. PLATING: ELECTRO-TIN (.0003 MIN).
 3. WIRE SIZE: 12-10 AWG
4.0-6.0 MM²
 4. "UL" LISTING #E32244
"CSA" LISTING #18689
 5. ALL DIMENSIONS IN INCHES/[MM].
 6. PARTS ARE ROHS COMPLIANT.
 7. DIMS. SHOWN ARE FOR REFERENCE ONLY.

SYMBOLS	THIS DRAWING CONTAINS INFORMATION THAT IS PROPRIETARY TO MOLEX ELECTRONIC TECHNOLOGIES, LLC AND SHOULD NOT BE USED WITHOUT WRITTEN PERMISSION										
	DIMENSION UNITS		SCALE		CURRENT REV DESC: MIGRATION TO ECTR/NX						
	INCH/MM		NTS		molex RING TONGUE TERMINAL KRIMPTITE 100-SERIES PRODUCT CUSTOMER DRAWING						
	GENERAL TOLERANCES (UNLESS SPECIFIED)										
▽ = 0	4 PLACES	±	±	EC NO: 619818 DRWN: ABENJAMINLW 2019/06/18 CHK'D: GROJAS01 2019/06/27 APPR: JMACNEIL 2019/07/10							
▽ = 0	3 PLACES	±	± 0.005	INITIAL REVISION: DRWN: EDWIN 1992/02/10 APPR: JMACNEIL 2019/07/10							
▽ = 0	2 PLACES	± 0.13	± 0.01								
▽ = 0	1 PLACE	± 0.25	±	DOCUMENT NUMBER: 190690192 DOC TYPE: PSD DOC PART: 000 REVISION: A							
▽ = 0	0 PLACES	±	±								
□ = 0	ANGULAR TOL ± 0.5 °			THIRD ANGLE PROJECTION		DRAWING SERIES		MATERIAL NUMBER		CUSTOMER	SHEET NUMBER
▽ = 0	DRAFT WHERE APPLICABLE MUST REMAIN WITHIN DIMENSIONS			C-SIZE		19069		SEE TABLE		GENERAL MARKET	1 OF 1

NOTES: $\pm .001$

① MAT'L: COPPER (STOCK TKN $\frac{.040}{1.02}$)

PLATING: ELECTRO-TIN

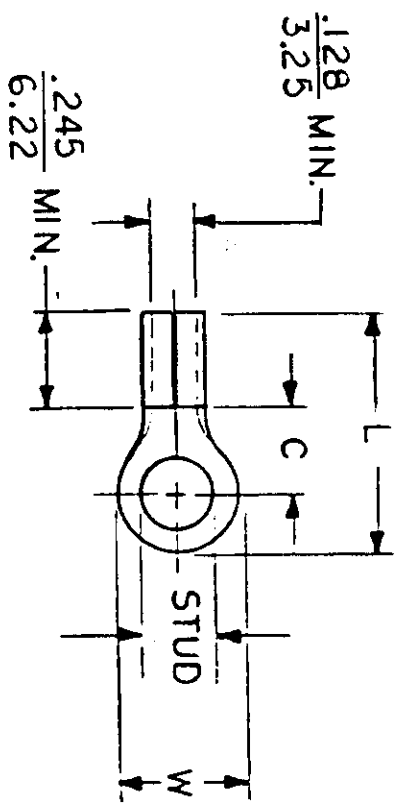
STUD SIZES: ($\pm .005$)

02 = .094 209 = .209
 04 = .119 413 = .413
 06 = .146
 08 = .173
 10 = .198
 14 = .265
 56 = .328
 38 = .390

UL LISTING # E32244
 CSA LISTING # 18689

ALL DIMENSIONS = INCHES
 M M

WIRE SIZE: 12-10 AWG
 4.0-6.0 MM²



FILE NO. C-CD-101-01

PART NUMBER	"W" ±.010	"C" MIN.	"L" MAX.	AVAILABLE STUD SIZES	TITLE:															
					RTERENCE	SCALE: NTS	DATE	RING TONGUE	TERMINAL	KRIMP TITE	100-SERIES									
C-101-	$\frac{.750}{19.05}$	$\frac{.611}{15.52}$	$\frac{1.280}{32.51}$	14, 56, 38, 76, 12																
C-128-	$\frac{.375}{9.53}$	$\frac{.303}{7.70}$	$\frac{.785}{19.94}$	04, 06, 08, 10, 209																
C-130-	$\frac{.530}{13.46}$	$\frac{.393}{9.98}$	$\frac{.952}{24.18}$	10, 14, 56, 38																
C-136-	$\frac{.282}{7.16}$	$\frac{.306}{7.77}$	$\frac{.741}{18.82}$	04, 06, 08																
C-140-	$\frac{.592}{15.04}$	$\frac{.468}{11.89}$	$\frac{1.056}{26.82}$	10, 14, 56, 38, 209, 413																
DIMENSIONAL TOLERANCES UNLESS OTHERWISE SPECIFIED					REFERENCE		SCALE: NTS		DATE		TITLE:									
FRAC.					DEC.		ANG.		DRAWN. BY: <i>Ed Frank</i>		2-10-92		RING TONGUE		TERMINAL		KRIMP TITE		100-SERIES	
±					±		±		CHKD. BY:		APPRD. BY:		DWC. NO.		A		CUSTOMER		DWG.	



CUSTOMER DWG.