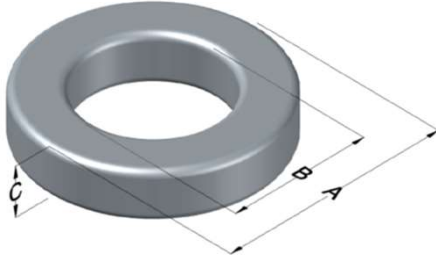




0076894A7HT15

110 Delta Drive
 Pittsburgh, PA 15238
 NAFTA Sales: (1)800-245-3984
 HK Sales : (852)3102-9337
 magnetics@spang.com
 www.mag-inc.com



Kool M μ Hf Permeability (μ)	A _L (nH/T ²)	Core Marking			Coating Color
		Lot Number	Part Number	Inductance Grade	
60	94 ± 8%	XXXXXX	76894A7HT15	N/A	Black

Dimensions	Uncoated		Coated Limits			Packaging
	(mm)	(in)	(mm)	(in)		
OD (A)	26.92	1.060	27.69	1.090	max	Cardboard cut-outs Box Qty = 320 pcs
ID (B)	14.73	0.580	14.10	0.555	min	
HT (C)	13.99	0.551	15.00	0.591	max	

Electrical Characteristics			Physical Characteristics						
Watt Loss @ 100kHz, 100mT max (mW/cm ³)	DC Bias min (oersteds)		Voltage Breakdown wire to wire min (V _{AC})	Break Strength min (kg)	Window Area W _a (mm ²)	Cross Section A _e (mm ²)	Path Length L _e (mm)	Volume V _e (mm ³)	Est. Weight (g)
	80%	50%							
450	45	100	3000	77.0	156	82.5	63.5	5,240	32.7

Winding Information					Temperature Rating	
Winding Length Per Turn				Wound Coil Dimensions (mm)		Curie Temp: 500°C
Winding Factor	(mm)	Winding Factor	(mm)	40% Winding Factor	OD	30.9
					HT	19.8
0%	43.6	40%	50.9	Completely Full Window	Max OD	30.9
20%	47.2	45%	51.8		Max HT	24.6
25%	48.2	50%	53.0	Surface Area (mm ²)		Notes:
30%	48.9	60%	55.1	Unwound Core	2,900	
35%	49.9	70%	57.6	40% Winding Factor	3,900	
Coating Temp (Continuous up to): 200°C						

