

DETAIL Y
(BOARD-LOCK)

DETAIL Z
(TERMINAL)

| PART STATUS | PART NO. (PACKED IN CARTON) | CKT SIZE | CONTACTS LUBRICATION |
|-------------|--------------------------------|----------|-------------------------|
| TOOLED | 87537-8816 | 68 | YES |
| TOOLED | 87537-8810 | 68 | NIL |

OBS TIN/LEAD P/N
EC NO: S2006-0729
DRAWN: LONG 2006/02/27
CHKD: SHONG 2006/02/27
APPR: KCLING 2006/02/28

QUALITY SYMBOLS
▽=0
∇=2

GENERAL TOLERANCES
(UNLESS SPECIFIED)

| | mm | INCH |
|----------|--------|-------|
| 4 PLACES | ± --- | ± --- |
| 3 PLACES | ± --- | ± --- |
| 2 PLACES | ± 0.25 | ± --- |
| 1 PLACE | ± --- | ± --- |

ANGULAR ± 3 °

DRAFT WHERE APPLICABLE
MUST REMAIN
WITHIN DIMENSIONS

DIMENSION STYLE
MM ONLY

DRAWN BY: PTLIM
DATE: 1999/01/05

CHECKED BY: SQUEK
DATE: 1999/01/25

APPROVED BY: KCLING
DATE: 1999/01/25

MATERIAL NO. SEE TABLE

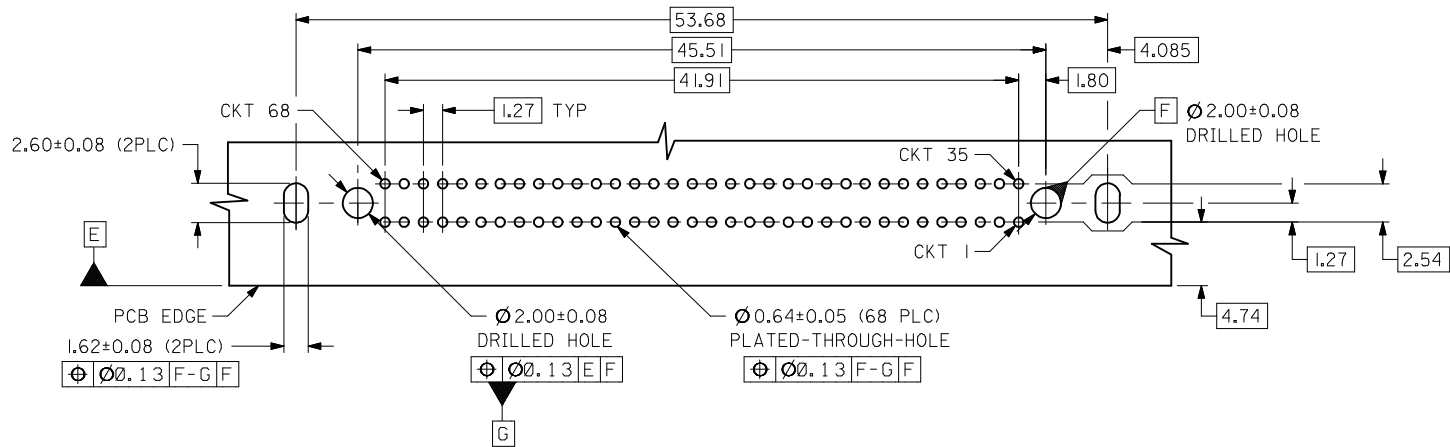
SCALE: NTS
DESIGN UNITS: METRIC
THIRD ANGLE PROJECTION

TITLE: EBBI, RCPT., RVS-BLND-M
1.27MM CTR., 68 CKTS, BTB
7.5MM HT., R/A

MOLEX INCORPORATED

DOCUMENT NO. SD-87537-005
SHEET NO. 1 OF 2

THIS DRAWING CONTAINS INFORMATION THAT IS PROPRIETARY TO MOLEX INCORPORATED AND SHOULD NOT BE USED WITHOUT WRITTEN PERMISSION

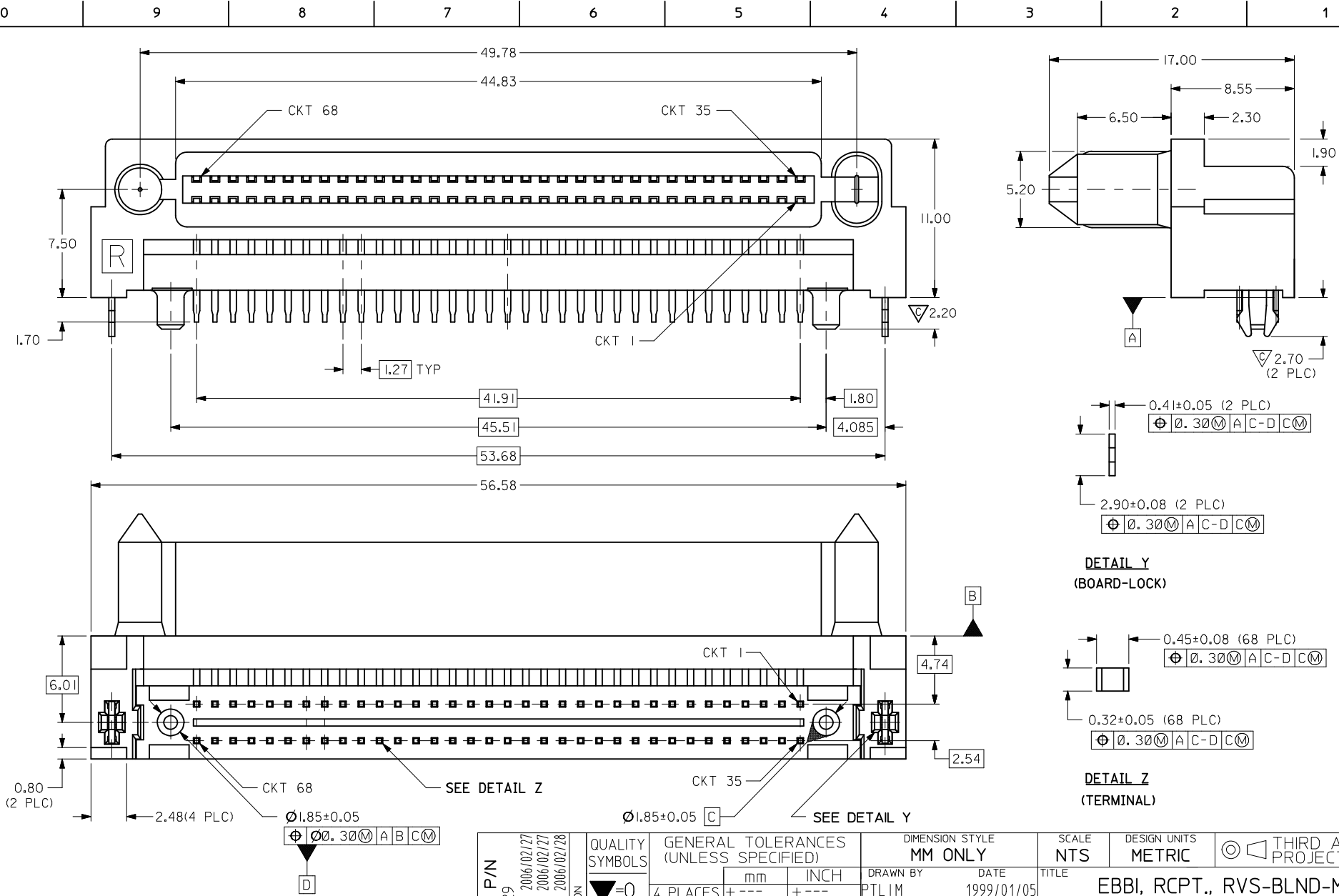


RECOMMENDED PC BOARD LAYOUT \triangle
COMPONENT SIDE

NOTES:

- 1 MATERIALS:
HOUSING - HIGH TEMPERATURE THERMOPLASTIC, GLASS FILLED, UL94V-0, COLOR : BLACK
TERMINAL - COPPER ALLOY
- 2 PLATING:
0.76µm MIN. GOLD IN SELECTIVE CONTACT AREA AND 2.54µm MIN. TIN IN SOLDER TAIL AREA, BOTH OVER 1.27µm MIN. NICKEL.
3. PRODUCT SPECIFICATION : PS-87537-0001
- \triangle RECOMMENDED P.C. BOARD THICKNESS IS 1.20+/-0.05MM.
- 5 CIRCUIT #58 TO BE RECESSED 0.50mm BEHIND ALL OTHER CONTACTS.
- \triangle PART IS LUBRICATED AT TERMINAL CONTACTS TO MINIMISE UNMATE FORCE.

| | | | | | | | | | | | |
|---|-------------|-----------------|---------------------------------------|-------|---|-----------------------|--------------------|--|------------------------|------------------------------|---------------------|
| OBS TIN/LEAD P/N EC NO: S2006-0729 DRWN:MLONG 2006/02/27 CHKD:SHONG 2006/02/27 APPR:KCLING 2006/02/28 | DESCRIPTION | QUALITY SYMBOLS | GENERAL TOLERANCES (UNLESS SPECIFIED) | | DIMENSION STYLE MM ONLY | | SCALE NTS | DESIGN UNITS METRIC | THIRD ANGLE PROJECTION | | |
| | | $\nabla=0$ | | mm | INCH | DRAWN BY PTLIM | DATE 1999/01/05 | TITLE EBBI, RCPT., RVS-BLND-M 1.27MM CTR, 68 CKTS, BTB 7.5MM HT., R/A | | | |
| | | $\nabla=0$ | 4 PLACES | ± --- | ± --- | CHECKED BY SQUEK | DATE 1999/01/25 | MOLEX INCORPORATED | | | |
| | | | 3 PLACES | ± --- | ± --- | APPROVED BY KCLING | DATE 1999/01/25 | MATERIAL NO. SEE TABLE | | DOCUMENT NO. SD-87537-005 | SHEET NO. 2 OF 2 |
| | | 2 PLACES | ± 0.25 | ± --- | DRAFT WHERE APPLICABLE MUST REMAIN WITHIN DIMENSIONS | | | | | | |
| | | 1 PLACE | ± --- | ± --- | SIZE A3 THIS DRAWING CONTAINS INFORMATION THAT IS PROPRIETARY TO MOLEX INCORPORATED AND SHOULD NOT BE USED WITHOUT WRITTEN PERMISSION | | | | | | |
| | | | ANGULAR ± 3 ° | | | | | | | | |



DETAIL Y
(BOARD-LOCK)

DETAIL Z
(TERMINAL)

| PART STATUS | PART NO. (PACKED IN CARTON) | CKT SIZE | CONTACTS LUBRICATION |
|-------------|--------------------------------|----------|-------------------------|
| TOOLED | 87537-8816 | 68 | YES |
| TOOLED | 87537-8810 | 68 | NIL |

OBS TIN/LEAD P/N
EC NO: S2006-0729
DRAWN: LONG 2006/02/27
CHKD: SHONG 2006/02/27
APPR: KCLING 2006/02/28

QUALITY SYMBOLS
▽=0
∇=2

GENERAL TOLERANCES (UNLESS SPECIFIED)

| | mm | INCH |
|----------|--------|-------|
| 4 PLACES | ± --- | ± --- |
| 3 PLACES | ± --- | ± --- |
| 2 PLACES | ± 0.25 | ± --- |
| 1 PLACE | ± --- | ± --- |

ANGULAR ± 3 °

DRAFT WHERE APPLICABLE
MUST REMAIN
WITHIN DIMENSIONS

DIMENSION STYLE
MM ONLY

| DRAWN BY | DATE |
|-------------|------------|
| PTL IM | 1999/01/05 |
| CHECKED BY | DATE |
| SQUEK | 1999/01/25 |
| APPROVED BY | DATE |
| KCLING | 1999/01/25 |

MATERIAL NO.
SEE TABLE

| SCALE | DESIGN UNITS | THIRD ANGLE PROJECTION |
|-------|--------------|------------------------|
| NTS | METRIC | ☉ |

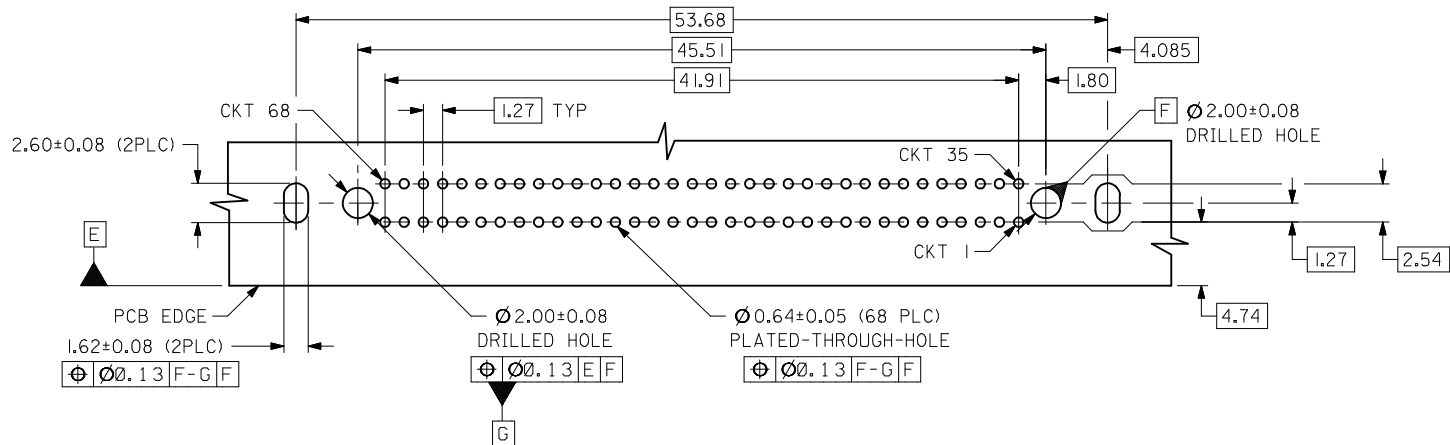
TITLE
EBBI, RCPT., RVS-BLND-M
1.27MM CTR., 68 CKTS, BTB
7.5MM HT., R/A

MOLEX INCORPORATED

DOCUMENT NO. SD-87537-005

SHEET NO. 1 OF 2

THIS DRAWING CONTAINS INFORMATION THAT IS PROPRIETARY TO MOLEX INCORPORATED AND SHOULD NOT BE USED WITHOUT WRITTEN PERMISSION



RECOMMENDED PC BOARD LAYOUT \triangle
COMPONENT SIDE

NOTES:

- 1 MATERIALS:
HOUSING - HIGH TEMPERATURE THERMOPLASTIC, GLASS FILLED, UL94V-0, COLOR : BLACK
TERMINAL - COPPER ALLOY
- 2 PLATING:
0.76 μ m MIN. GOLD IN SELECTIVE CONTACT AREA AND 2.54 μ m MIN. TIN IN SOLDER TAIL AREA, BOTH OVER 1.27 μ m MIN. NICKEL.
- 3. PRODUCT SPECIFICATION : PS-87537-0001
- \triangle RECOMMENDED P.C. BOARD THICKNESS IS 1.20+/-0.05MM.
- 5 CIRCUIT #58 TO BE RECESSED 0.50mm BEHIND ALL OTHER CONTACTS.
- \triangle PART IS LUBRICATED AT TERMINAL CONTACTS TO MINIMISE UNMATE FORCE.

| | | | | | | | | | | | |
|---|-------------|--|---------------------------------------|------------|----------------------------|---------------------|---|--|------------------------|---------------------|--|
| OBS TIN/LEAD P/N EC NO: S2006-0729 DRWN:MLONG 2006/02/27 CHKD:SHONG 2006/02/27 APPR:KCLING 2006/02/28 | DESCRIPTION | QUALITY SYMBOLS | GENERAL TOLERANCES (UNLESS SPECIFIED) | | DIMENSION STYLE MM ONLY | | SCALE NTS | DESIGN UNITS METRIC | THIRD ANGLE PROJECTION | | |
| | | $\nabla=0$ | | mm | INCH | DRAWN BY PTLIM | DATE 1999/01/05 | TITLE EBBI, RCPT., RVS-BLND-M 1.27MM CTR, 68 CKTS, BTB 7.5MM HT., R/A | | | |
| | | $\nabla=0$ | 4 PLACES | ± --- | ± --- | CHECKED BY SQUEK | DATE 1999/01/25 | APPROVED BY KCLING | | | |
| | | | 3 PLACES | ± --- | ± --- | DATE 1999/01/25 | MATERIAL NO. SEE TABLE | | | | |
| | | 2 PLACES | ± 0.25 | ± --- | APPROVED BY KCLING | | DATE 1999/01/25 | DOCUMENT NO. SD-87537-005 | | SHEET NO. 2 OF 2 | |
| | | 1 PLACE | ± --- | ± --- | ANGULAR ± 3 ° | | THIS DRAWING CONTAINS INFORMATION THAT IS PROPRIETARY TO MOLEX INCORPORATED AND SHOULD NOT BE USED WITHOUT WRITTEN PERMISSION | | | | |
| | | DRAFT WHERE APPLICABLE MUST REMAIN WITHIN DIMENSIONS | | SIZE A3 | | | | | | | |